

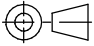

FIRST ISSUE DATE : 13/01/04

No.	REVISION	DATE
①	Add std Symphoni IP rating. Add Polar Plot note. (For CPD)	C.W. 10/01/05 ECN:
②	Add locking feature for CPD compliance	M.S. 05/05/05 ECN:
③	Add Italian version to back of leaflet.	11/04/06 C.W ECN:

FOR INSTALLATION DETAILS
SEE ATTACHED

Notes.

1. Installation Details to be printed on both sides of an A4 sheet.
2. Master print artwork to be made from this file, or a high quality print output.
(Supplier to request file format required)
3. Supplier to submit initial sample for Fulleons approval prior to commencing with production.

25-5655-D	D	A4 White paper sheet	Standard	Print : BLACK
PART No.	Issue	MATERIAL	FINISH	COLOUR
MODEL : Cooper Symphoni Sdr.		PART : Installation Detail		
DESIGNED	Chris Anderson	CHECKED		
DRAWN	Chris Anderson	DATE		
	Third Angle Projection	All Dimension in Millimetres	SCALE 1:1	Sheet 1 of 3
Fulleon Ltd.		Llantarnam Park, Cwmbran,Gwent. NP44 3AW		

CAS381 Wall Sounder Specification

Supply Voltage	: 17 ~ 32 Vdc
Cable Size / type	: 0.5 ~ 2.5mm/ FIRETUF, FP200 or MICC
Standby current	: < 320 uA
Operating temperature	: -10 to +55 degrees C (95%RH)
Material	: ABS/FR Plastic (Wall Sounder)
	: ABS/PC FR (Wall Sounder IP66)
Sound output @ +/-3dB (set by panel)	: Low volume : 87dB @ <2mA
	: Medium volume : 93dB @ <3mA
	: High volume : 100dB @ <6mA
Environment Category	: Type A/B
Compliance	: EN54-3 Fire Alarm Device -Sounder
Tones (set by panel)	: Continuous 984Hz
	: Pulsed 984 / 0Hz pulse 1Hz
	: Two Tone 644 / 984Hz @ 1Hz cycle
	: Slow whoop 500-1200Hz in 3.5 seconds / 0.5secs gap

Security House
Vantage Point Business Village
Mitcheldean
Glos.
GL17 0SZ



Tel: + 44 (0) 1594 541900

Order Codes

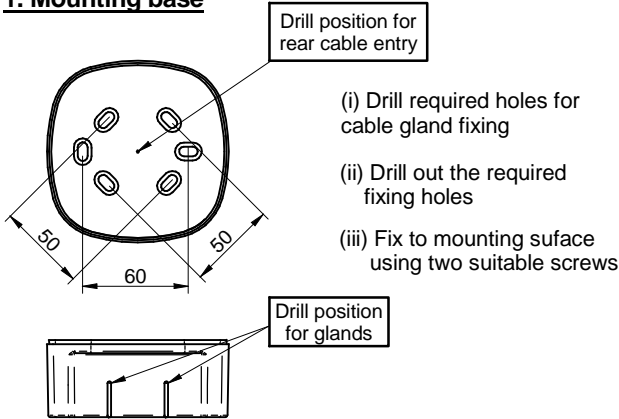
CAS381	Addressable Wall Sounder
CAS381/WP	Addressable Wall Sounder IP66*

Note: Polar dispersion information available in the Technical manual.(Ref:M05-011)

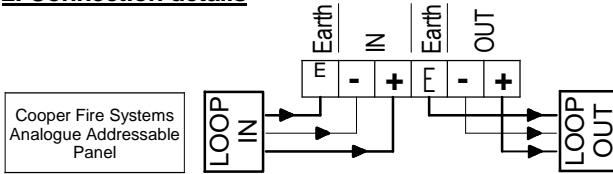
Installation Details

Wall Sounder (Type A / IP21C)

1. Mounting base



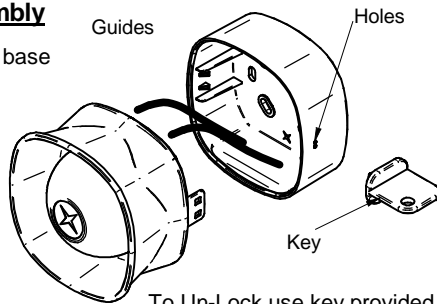
2. Connection details



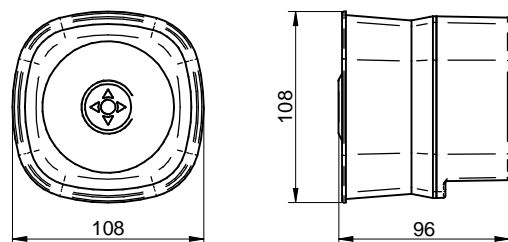
WARNING: Do NOT use high voltage testers if ANY equipment is connected to the system.
Earth screen must be continuous along entire length of loop.

3. Sounder assembly

- (i) Clip sounder onto base
- (ii) Ensure cables do not put stress on the PCB

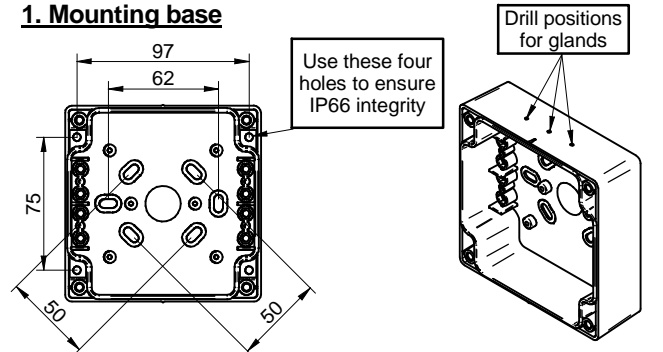


Dimensions



Wall Sounder (Type B / IP33C)

1. Mounting base

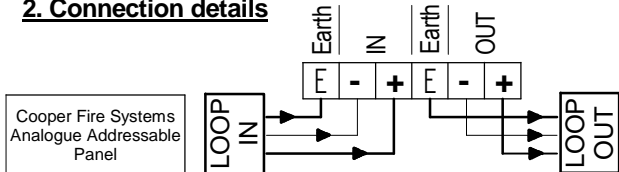


- (i) Drill required holes for cable gland fixing (top or bottom) and ensure cables are correctly sealed for IP66 integrity.
- (ii) Fix to mounting surface using four suitable screws

- (iii) Fix to mounting surface using four suitable screws

*All products meet minimum requirements of IP33C in accordance with EN54-3

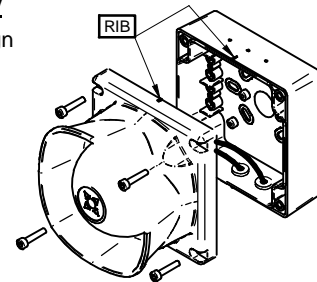
2. Connection details



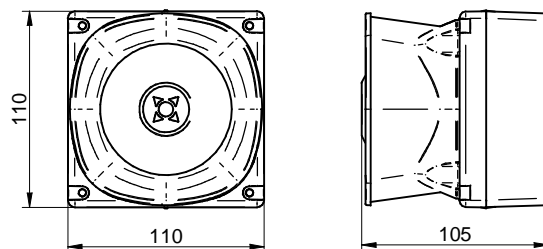
WARNING: Do NOT use high voltage testers when beacons or control panel are connected to the system.
Earth screen of cable to be continuous between sounders.

3. Sounder assembly

- (i) Location ribs must align on base and sounder
- (ii) Ensure cables do not put stress on the PCB
- (iii) Bolt sounder onto base



Dimensions



CAS381A - SIRENA ANALOGICA

Alimentazione	: 17 ~ 32 Vcc
Dimensione cavi	: 0.5 ~ 2.5mm
Corrente a riposo	: < 320 uA
temperatura di esercizio	: da -10°C a +55°C (95%RH)
Materiale	: ABS/FR Plastico
Pressione sonora @ +/-3dB (progr. da centrale)	: ABS/PC FR (versione IP66) : Basso volume : 87dB @ <2mA : Medio volume : 93dB @ <3mA : Alto volume : 100dB @ <6mA
Categoria ambientale	: Tipo A/B
Conformità	: EN54-3
Toni (Progr. da centrale)	: Continuo 984Hz : Impulso 984 / 0Hz, 1Hz : Doppio Tono 644 / 984Hz @ 1Hz ciclico : Incrementale 500-1200Hz in 3.5 secondi / 0.5sec. pausa

Cooper CSA
Via A Meucci, 10
20094 Corsico (Milano)



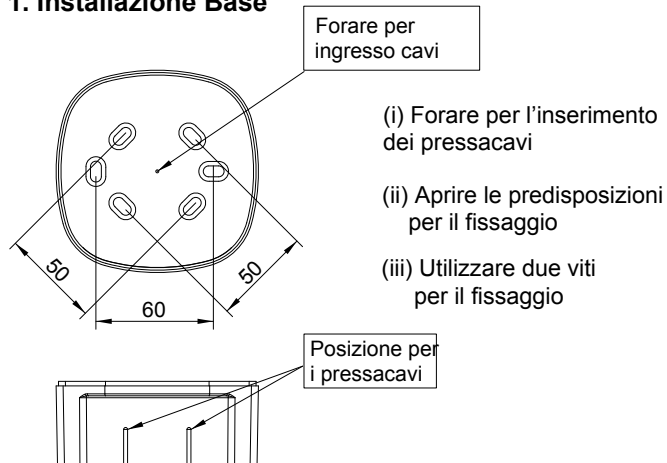
Tel: 024 586 7396

Codice	Descrizione
CAS381	Sirena Analogica da parete
CAS381WP	Sirena Analogica da parete IP66

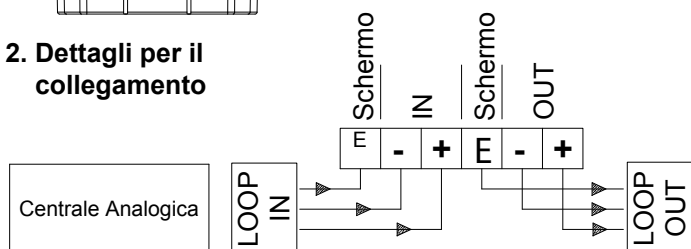
Dettagli per l'installazione

Sirena da parete (Tipo A/IP21C)

1. Installazione Base



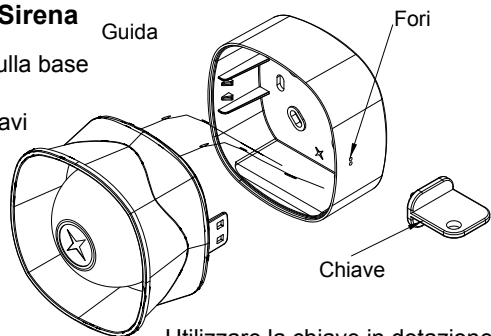
2. Dettagli per il collegamento



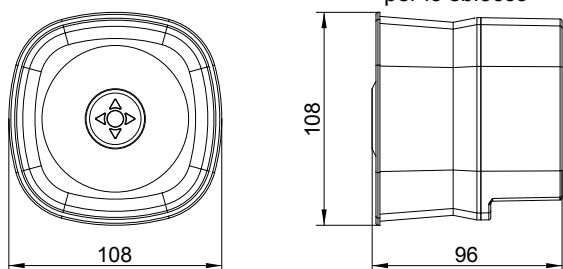
ATTENZIONE: NON utilizzare strumenti di misura in tensione se il dispositivo è connesso alla centrale
Lo schermo deve essere continuo lungo tutto il Loop

3. Assemblaggio Sirena

- (i) Inserire la sirena sulla base
- (ii) Assicurarsi che i cavi non provochino pressione sul circuito

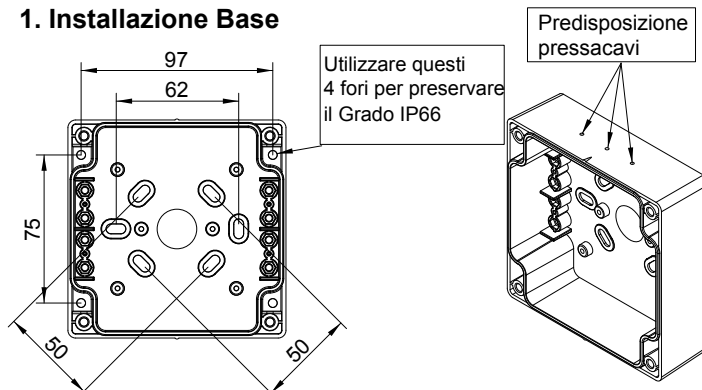


Dimensioni



Sirena da parete (Tipo B/IP33C)

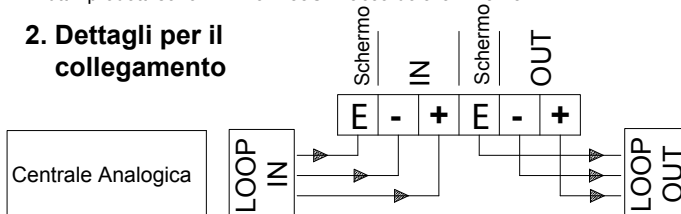
1. Installazione Base



- (i) Utilizzare le predisposizioni superiori ed inferiori per i pressacavi ed assicurare l'integrità al Grado IP66
- (ii) Utilizzare due viti per il fissaggio

Tutti i prodotti sono minimo IP33C in accordo alla EN54-3

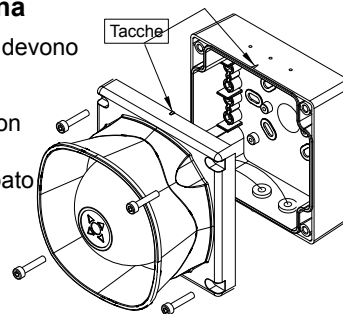
2. Dettagli per il collegamento



ATTENZIONE: NON utilizzare uno strumento di misura in tensione se il dispositivo è connesso alla centrale.
Lo schermo deve essere continuo lungo tutto il Loop.

3. Assemblaggio Sirena

- (i) Le tacche di riferimento devono essere allineate.
- (ii) Assicurarsi che i cavi non provochino eccessiva pressione al circuito stampato
- (iii) Inserire la sirena nella base



Dimensioni

